

Canon

imageRUNNER
7105 / 7095



REVOLUTIONIZE

Your Printing Needs

meap
POWERED BY



New-generation, high-speed imageRUNNER® technology meets the rigors of high-volume offices and production environments with unmatched versatility.

REVOLUTIONIZE Your Printing Needs



Designed to support enterprise-class environment-demanding the utmost in productivity and durability, the **imageRUNNER 7105/7095** devices provide versatility in both functionality and hardware configuration.

The **imageRUNNER 7105/7095** are perfectly suited for central reproduction departments, print-for-pay establishments, print-on-demand applications, and large corporate offices where rapid document capture and production are required. The **imageRUNNER 7105/7095** offers the speed and versatility to serve as a complete document publishing and communications hub device for busy corporate departments. And best of all, each model is Internet-ready, so you can be assured of the tightest possible integration and device control across your entire corporate network.

REVOLUTIONIZE YOUR DOCUMENT PRODUCTION CAPABILITIES

The imageRUNNER 7105 and imageRUNNER 7095, devices will redefine your expectations for total in-house black-and-white document production.

Productivity

While their output speeds are impressive, it's what Canon has done to each system's internal design that's truly inspiring. Every model features dual Canon custom processor technology to handle sophisticated applications with incredible speed. With available support for actual 1200 x 1200 dpi* print resolution and Canon's exclusive Fine Character and Edge Technology (FCET), you can count on outstanding image quality on every page.

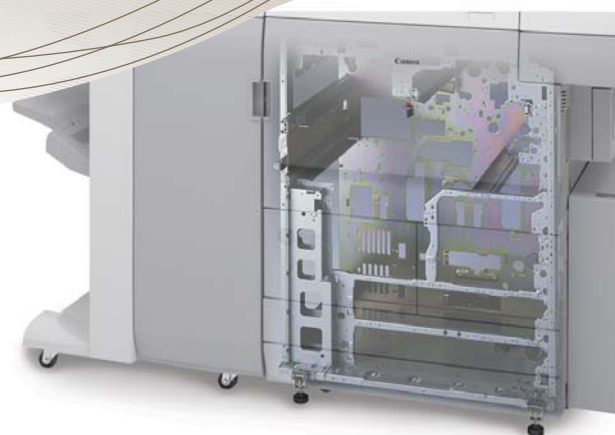
Job programming is a breeze, thanks to the large 10.4" color LCD user interface panel that clearly displays available modes and functions. From the desktop, intuitively designed drivers and utilities guide connected users through jobs with point-and-click simplicity.



10.4" Color LCD panel

*Available when printing with Canon UFR II and PostScript[®] page description languages.

*1 Note: Requires Multi-PDL Printer Kit-H1 or imagePASS-S1



A sturdy engine design provides maximum durability

Reliability

Each imageRUNNER 7105/7095 device is infused with the strength and power needed to withstand the daily punishment of production environments. A sturdy, reinforced frame offers rock-solid stability, while multifeed detection technology stands guard against double-feeds and lost productivity. These improvements, along with high-durability parts and components, add up to superior reliability for environments producing huge volumes of pages every month.

Durability

Set new expectations for uptime and maintenance requirements. A high-capacity toner bottle design provides quick and clean replacement and can be changed while the machine is running for non-stop productivity. And with a long-lasting 6,000,000-impression Amorphous-Silicon (A-Si) drum, the imageRUNNER 7105/7095 devices deliver low operating costs and less downtime.



"Set-On" Toner Bottle



A-Si Drum

REVOLUTIONIZE YOUR SYSTEM

VERSATILITY EXPECTATIONS

The imageRUNNER 7105 and imageRUNNER 7095 devices are modular, allowing you to mix and match the meet your diverse publishing requirements and drive productivity to new levels.

The Finisher-V1 or Saddle Finisher-V2 provides the collating, stapling, saddle-stitching and optional punching flexibility required for busy production environments.

Install the Document Insertion Unit-C1 on top of the Finisher Units to feed booklet covers into job streams.

Add the Perfect Binder-A1* to produce perfectly bound and trimmed books with wraparound covers.

The Professional Puncher-A1* offers a number of optional hole-punch tools to support a variety of advanced in-line binding selections.

Attach the Booklet Trimmer-B1 to the Saddle Finisher-V2 to trim and stack large quantities of booklet sets.

The Paper Folding Unit-D1 Z-folds A3 pages into document sets with a finished A4 size.

* The Professional Puncher-A1 cannot be installed simultaneously with the Perfect Binder-A1 and/or Punch Unit-U1/V1
Note: Some accessories require additional equipment or may be required for other options.
The imageRUNNER 7095 shown with optional accessories.



paper supply and advanced finishing accessories you need to

The High-Capacity Stacker-A1 stacks up to 6,000 sheets for long periods of unattended operation. Includes removable dolly.

The standard Duplexing Automatic Document Feeder makes quick work of complex originals.



Add the Paper Deck-W1 or Paper Deck-X1 to raise system paper capacity to a maximum of 7,650 sheets.



Perfect-Bound Booklets



Professional Punching



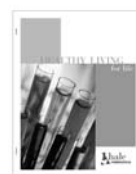
Tab Inserts



Z-Folding



Saddle-Stitched Booklet



Stapled Output



REVOLUTIONIZE YOUR DOCUMENT WORKFLOW STANDARDS

Multitask, reduce costs, speed job turnaround, get more done every day- that's what high-volume productivity is all about.

Boost Your Efficiency

The imageRUNNER 7105/7095 devices offer a host of document reproduction and storage features to ensure that every job is produced on time, every time.

Use the Job Block Combination function to scan multiple batches of originals with different settings to produce complex documents with little manual intervention. Then check the integrity of scanned pages before committing to a lengthy run with enhanced Sample Set features. Cascade and Remote Copy features let you double productivity to reduce job completion time and direct output to the point-of-need. Offset-stack document sets in groups to speed preparation for off-line finishing or packaging. Each imageRUNNER device offers a Mail Box function, allowing the system to deliver added value as an on-site document library—a great solution for reprinting forms and static documents.



Express Copy

Communicate With Ease

Equip your imageRUNNER device with the optional Universal Send™ Kit-E1 to send scanned documents to individual or group e-mail addresses, Internet faxes, network folders, and document management systems—in any combination. Ensure the integrity and privacy of scanned data by using the PDF Encryption¹ feature to send confidential files that only intended recipients can access. Increase workflow efficiencies by creating Searchable PDF files² for fast document retrieval.



Universal Send™

Retrieve Information Anytime

Transform your imageRUNNER system into an on-site information retrieval kiosk with the optional Web Access function. Navigate Internet or intranet pages right from the color LCD panel to locate and output desired forms or documents, without the need for a PC.



Web Access

¹ Requires the Universal Send PDF Encryption Kit-B1

² Requires the Universal Send Searchable PDF Kit-A1

REVOLUTIONIZE YOUR NETWORK PRINTING STANDARDS

Powerful connectivity solutions for every production environment, application, and budget.

Communicate With Ease

Canon offers a choice of print controller solutions to keep pace with demanding departments and page-churning production environments. There's an embedded print controller option that provides support for PCL 5e, PCL 6, and PostScript® 3™ emulation, plus Canon's proprietary UFR II (Ultra Fast Rendering) technology for exceptional printing performance in both Windows® and Macintosh® networks. And there's the optional imagePASS-S1 external print controller, which adds support for genuine Adobe® PostScript 3 along with PCL 5e/6, plus access to advanced options such as Hot Folders, Command Workstation®, FreeForm™, and EFI Impose to manage complex workflows.



imagePASS-S1

Publish Professional-Looking Documents

Build complex documents in a simple drag-and-drop environment with Canon's powerful imageWARE™ Publishing Manager software. This optional desktop publishing utility simplifies the production of professional-looking documents containing various inserts or chapters from multiple files. Merge, edit, or reassemble content from several sources such as manuals, presentations, brochures, proposals, and catalogs into a single, cohesive document— even combine documents created in different applications.

Canon provides all the tools you need for a complete, easy-to-use, in-house document production system!

Document Make-Ready Tools



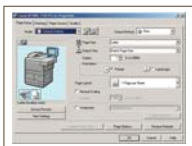
Special Copy Features
Job Block Combination:
Combine different
settings in one job



Web Access
Information retrieval
from Internet
and/or intranet



imageWARE
Publishing Manager
Build dynamic documents
using drag-and-drop
functionality



Print Driver
Page Layout, Finishing,
Paper Source, and
quality settings



Job Submission **Document Storage**

Professional-Level Finishing



Advanced In-Line Finishing Options **Print**

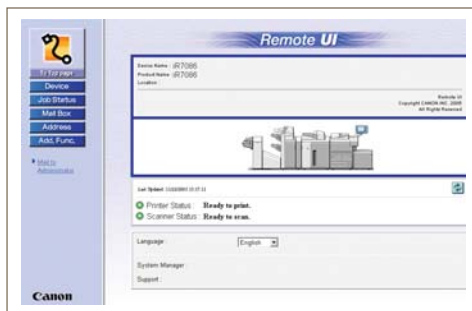
- High Image Quality
- Fast Processing
- High-Speed Output

REVOLUTIONIZE YOUR DEVICE MANAGEMENT STANDARDS

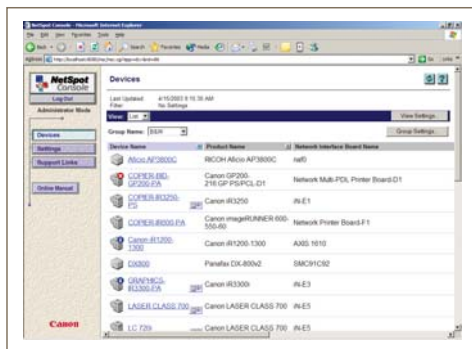
Your need to address device management, system monitoring, and data security can now be met.

Simplify Installation And Integration

Through a comprehensive suite of Canon-supplied software utilities, the Canon imageRUNNER 7105/7095 devices answer the call for solutions that are easy to install, can seamlessly integrate with existing network management applications, and allow for monitoring and device control from anywhere on the network. With Remote UI™ (User Interface), end-users can check device status and configuration before initiating a job for more informed printing decisions. Administrators will appreciate the system's device information delivery function that broadcasts the desired settings from a target machine to other networked imageRUNNER devices for consistent operability.



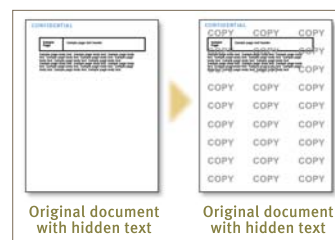
Remote UI Screen



Device Management Utilities

Secure Watermark

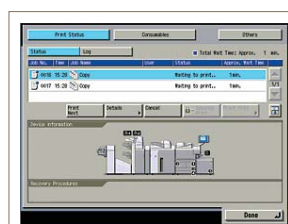
Regain control over hard-copy document distribution and versioning with the optional Secure Watermark function. This feature assists in protecting information through the inconspicuous embedding of coded information in documents. The hidden watermark becomes visible only when the document is copied and deters users from reproducing sensitive or confidential documents.



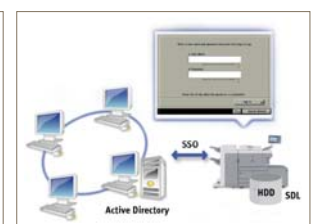
Secure Watermark

Achieve Total Control

At the device, one-touch access to complete machine status is accomplished through the System Monitor function, while inside the machine a number of network-enabled user authentication tools, such as Simple Device Login (SDL) and Single Sign-on (SSO), help ensure that only authorized users have access to the device and data stored in memory. For even greater protection, the optional imageRUNNER Security Kit-A2 enables the encryption of data stored on the hard disk and can initiate three overwriting methods to completely erase information.



System Monitor



Simple Device Login (SDL) and Single Sign-on (SSO)

REVOLUTIONIZE THE CONVENTIONAL

Innovative device customization and accessibility technologies to empower everyone on your team.

Meet Unique Workflow

Based on Java technology, Canon MEAP® (Multifunctional Embedded Application Platform) architecture allows the system to incorporate unique applications that run embedded within the device. The result is total integration into your company's infrastructure by presenting customized applications to walk-up users directly from the imageRUNNER 7105/7095 systems' color LCD panel.



MEAP Application: Virtual Mailbox



MEAP Application: eCopy Share Scan™



MEAP Application: imageWARE Document Manager Client for MEAP

Equal Access For All

The imageRUNNER 7105/7095 devices go even further to provide easy system access to every authorized user. Disabled employees can operate system functions from a laptop or desktop PC using the Remote Operator's Software Kit that emulates the control panel; visually impaired users can receive audible job confirmation through the optional Voice Guidance Kit.



Voice Guidance Kit

Image Of A Leader

As a leading producer of network-connected multifunction devices, Canon continues to set new standards for quality, performance, and reliability. That's why businesses of every size and scope trust Canon to provide industry-leading solutions that enhance productivity and make every business more productive.

SPECIFICATIONS

Main Unit

Type:	Digital Multifunctional Imaging System
Imaging System:	Laser Dry Electrostatic Transfer System
Developing System:	Dry Monocomponent Toner Projection
Main Unit CPU:	Dual Canon Custom Processors
Interface Connections:	10 / 100 Base-T (RJ-45) / USB2.0 High Speed
Image Server Memory:	Standard 1GB RAM + 40GB HDD
Max. Mail Boxes Supported:	100 (Max. Page Capacity: Approximately 20,000 pages)
Max. Copy Reservation:	20 Jobs
Acceptable Originals:	Sheets, Books, 3-Dimensional Objects
Max. Original Size:	A3
Max. Copy Size:	A3
Min. Copy Size:	10 x 15cm (Postcard) (Stack Bypass)
Scanning Resolution:	600 x 600 dpi
Copy Resolution:	1200 x 600 dpi (Interpolated)
Halftone:	256-Level Grayscale
Exposure Control:	Automatic or Manual (Text, Photo, or Text / Photo)
Copy Speed:	
iR 7105	105 cpm (A4) 53 cpm (A3)
iR 7095	95 cpm (A4) 49 cpm (A3)
First-Copy Time:	2.8 seconds (Platen)
Warm-Up Time:	6 Minutes or Less
Multiple Copies:	1 to 9,999 sheets
Duplexing:	Standard Automatic Trayless Duplexing
Magnification:	
From Glass:	25 to 400% (In 1% increments)
From Feeder:	25 to 200% (In 1% increments)
Preset Reduction:	25, 50, 64, 73,78 percents
Preset Enlargement:	121, 129, 200, 400 percents
Paper Sources	
Standard:	Dual Front-Loading Drawers (1,500 sheets Each) Dual Front-Loading Cassettes (550 sheets Each) 50-Sheet Stack Bypass
Optional:	3,500-Sheet Paper (250 sheets each)x up to 3
Paper Capacity:	Standard: 4,150 Sheets Maximum: 7,650 Sheets
Acceptable Paper Weight:	64 gsm Bond to 200 gsm Index
Power Consumption:	2.15kW
Photoconductor Yield:	6 Million Impressions
Toner Yield:	47,000 Images @ 6% Coverage

Standard Accessories

Duplexing Automatic Document Feeder	
Tray Capacity:	100 Sheets
Scanning Speed:	85 Sheets Per Minute (A4)
Acceptable Originals Size:	Statement to A3
Acceptable Size Originals:	Same Width
Acceptable Paper Weight:	49 gsm to 120 gsm Bond

Optional Accessories

Paper Deck– W1 / X1	
Paper Capacity:	3,500 Sheets
Number of Drawers:	1
Acceptable Paper Weight:	64 gsm Bond to 200 gsm Index
Acceptable Paper Size:	
Paper Deck– W1:	A4
Paper Deck– X1:	A4-R, A4, Legal, A3

High-Capacity Stacker– A1*

Paper Capacity:	6,000 Sheets
Number of Trays:	2 (includes rolling Dolly for moving documents stacks)
Tray Capacities:	
Top Sample Tray:	1,000 sheets
Stack Tray:	5,000 sheets
Acceptable Paper Weight:	64 gsm Bond to 200 gsm Index
Acceptable Paper Size:	
Top Sample Tray:	A3, Legal, A4, A4-R, Statement-R, Executive
Stack Tray:	A3, Legal, A4, A4-R, Executive

Finisher– V1 / Saddle Finisher– V2

Number of Trays:	2 / 3
Tray Capacities:	
Top Tray:	3,000 sheets
Lower Tray:	2,000 sheets
Saddle-Stitch Tray:	30 Booklets or Limitless
Acceptable Paper Weight:	
Finisher– V1:	64 gsm Bond to 200 gsm Index
Saddle Finisher– V2:	64 gsm Bond to 200 gsm Index
Acceptable Paper Size:	A3, Legal, A4, A4-R, Statement-R, Executive
Staple Positions:	Corner Stapling, Double Stapling
Max. Stapling Capacity:	100 Sheets (A4, Executive) 50 Sheets (A3, Legal, A4)
Type of Staple:	Staple– N1 (5,000 x 3)

Saddle-Stitching (Saddle Finisher– V2 Only)

Acceptable Paper Size:	A3, Legal, A4-R
Folding Mode:	V-Folding Standard
Stapling Capacity:	20 Sheets (80 Pages)
Type of Staple:	Staple– P1 (5,000 x 2)

Perfect Binder-A1

Trimming Method:	3 or 1 directions
Number of Sheets:	10 to 200 sheets (64-80gsm) 10 to 150 sheets (81-105gsm) or 25mm or less in thickness
Acceptable Paper Size:	A4, LTR, B5, A5

Professional Puncher– A1 (For Finisher– V1 / Saddle Finisher–V2)

Type:	External In-Line Punch Unit
Hole-Punching Method:	Press Punch Unit
Acceptable Punch:	
Paper Weight:	75 gsm Bond to 200 gsm Index
Acceptable Punch Paper Size:	A4
Punch Speed:	Up to 105ppm (Depending on speed of main unit)
Punch Patterns:	Plastic Comb (19-Hole) Twin Loop (32-Hole) Twin Loop (21-Hole) Colour Coil (44-Hole) Velo Bind (11-Hole) Loose-leaf Bind (3-Hole) Proclick® (32-Hole)

Puncher Unit– V1 (For Finisher– V1 / Saddle Finisher– V2)

Type:	Internal Punch Unit
Hole-Punching Method:	Press Punch System
Acceptable Punch:	
Paper Weight:	64 gsm Bond to 200 gsm Index
Acceptable Punch Paper Size:	A4
Two Holes:	Legal, A4-R
Three Holes:	A3, A4
Punch Speed:	Up to 105 ppm (Depending on speed of main unit)

Document Insertion Unit– C1 (For Finisher– V1 / Saddle Finisher– V2)

Number of Trays:	2
Capacity:	
Upper Tray:	200 Sheets
Lower Tray:	200 Sheets
Acceptable Paper Weight:	64 gsm to 300 gsm Index
Acceptable Paper Size:	
Upper Tray:	A4, A4-R, Excutive
Lower Tray:	A3, Legal, A4, A4-R, Executive

Paper Folding Unit– D1 (For Finisher– V1 / Saddle Finisher– V2)

Folding Method:	Roller Pressure Folding
Folding Type:	Z-Fold
Acceptable Paper Weight:	64 gsm Bond to 75 gsm Bond
Acceptable Paper Size:	A3

Booklet Trimmer– B1* (For Saddle Finisher– V2)

Margin Trimming:	Open-End Only
Trim Thickness:	40 Sheets
Waste Tray Capacity:	1,500 Sheets of Trimmed Strip
Acceptable Paper Weight:	64 gsm Bond to 200 gsm Index
Output Tray Capacity:	30 Booklets

Connectivity Options

Universal Send Kit– E1

Sending Method:	E-mail, I-fax, File Server (IPX, FTP, SMB), User Inbox
Address Book Capacity:	1,800 Destinations
File Format:	
Standard:	TIFF, PDF
Optional:	PDF (OCR)
Sending Method:	Statement to A3
Scan Density:	200 / 300 / 400 / 600 dpi

Canon Multi-PDL Printer Kit– H1

Processor:	Dual Canon Custom Processors
Memory:	1 GB – Shared
Storage:	40 GB – Shared
PDL Support:	PCL 5e, PCL 6, Postscript® 3 Emulation, UFR II
Resolution:	1200 x 1200 dpi: UFR II, Postscript 3 Emulation 2400 x 600 dpi: PCL 5e, PCL 6

Interface Connections:

Standard:	10 / 100 Base-TX (RJ-45), USB 2.0 High Speed
Network OS:	Windows® 98 / ME / 2000 / XP Windows NT® 4.0 Windows Server 2003 (TCP / IP) Solaris 1.1x, 2.5x or Later Macintosh® OS 8.0 or Later (PPD) Novell® Netware® V3.2, 4.1, 4.11, 4.2, 5, 5.1, 6, 6.5 (IPX / SPX)

ImagePASS– S1 Print Controller

Type:	External Stand-Alone Controller
Processor:	Intel® Celeron® D2.8 GHz
Memory:	256 MB
Storage:	80 GB HDD
PDL Support:	Adobe® Postscript 3, PCL 5e, PCL 6,
Resolution:	1200 x 1200 dpi: Postscript 3 2400 x 600 dpi: PCL 5e, PCL 6

Interface Connections:

Standard:	10 Base-T / 100 Base-TX / 1000 Base-T (RJ-45), USB 2.0 High Speed
Network OS:	Windows® 98 / ME / 2000 / XP Windows Server 2003 (TCP / IP) Solaris 8 or Later Sun OS 4.1.3 or Later Macintosh® OS 9.2, OS X (10.2.4) or Later Novell® Netware® V4.2, 5.1, 6.5 (IPX / SPX)

Additional Optional Accessories and Utilities

Cassette- AB1	Voice Guidance Kit- A2
Tab Feeding Attachment- A1	Secure Watermark Kit- A1
Document Tray- L1	Barcode Printing Kit- A1
Control Card Reader- D1	Finisher Option Power Supply Unit- R1
Control Card Sets	Stacker Dolly- A1
Web Access Software- C1	Punch Tools
Remote Operator's Software Kit- A1	ADF Access Handle-A1
Security Expansion Board- F1	Hot Folder for imagePASS- S1
Expansion Bus- D1	Impose for imagePASS- S1
imageRUNNER Security Kit- A2	

Device Dimensions and Power Requirements Chart

Product / Accessory Name	Dimensions (H x W x D)	Weight	Power
Main Unit	1474 x 1216 x 783mm	280 kg	208V, 60Hz, 12A
Paper Deck– W1	570 x 323 x 583mm	41 kg	Directly From Main Unit
Paper Deck– X1	574.5 x 593 x 621mm	46 kg	
High-Capacity Stacker– A1	1290 x 860 x 765mm	200 kg	220V
Perfect Binder– A1	1360 x 920 x 783mm	324 kg	208V, 15A
Finisher– V1	1180 x 800 x 792mm	126 kg	Directly From Main Unit*
Saddle Finisher– V2	1180 x 800 x 792mm	178 kg	or 208V, 60Hz, 12A**
Document Insertion Unit– C1	213 x 625 x 667mm	17 kg	From Finisher– V1 or Saddle Finisher– V2
Paper Folding Unit– D1	1040 x 179 x 786mm	44 kg	
Booklet Trimmer– B1	1040 x 1575 x 770mm	152 kg	
Professional Puncher– A1	978 x 305 x 723mm	70 kg	

* When Finisher is equipped with Paper Folding Unit– D1 and /or Document Insertion Unit– C1

** When Finisher is equipped with Professional Puncher– A1, Booklet Trimmer– B1, High-Capacity Stacker– A1, and /or Perfect Binder– A1



Regional Office

Canon Singapore Pte Ltd.

1 HarbourFront Avenue
 #04-01 Keppel Bay Tower
 Singapore 098632
 Tel: 65-6799 8888
 Fax: 65-6799 8882

Distributors & Representatives Offices -

Bangladesh: **Flora Limited**
 Adamjee Corporate Head Quarters
 (4th Floor) 119-120
 Motijheel Commercial Area
 Dhaka 1000 Bangladesh
 Tel: 880-2-716-2742-46 / 225
 Fax: 880-2-955 0030

Brunei: **INTERHOUSE COMPANY**
 No. 5 -7 Bunut Jaya Complex
 Spg 574 Jalan Tutong BF1320
 P.O Box 423, Seri Complex
 Bandar Seri Begawan
 BA 1779
 Brunei Darussalam
 Tel: 673-2 653001
 Fax: 673-2-653003

Cambodia: **Royal Cambodia Co., Ltd.**
 #427 Preab Monivong Blvd
 Phnom Penh
 Kingdom of Cambodia
 Tel: 855-23-428955
 Fax: 855-23-722961

Hong Kong: **Canon Hong Kong Co. Ltd**
 19/F, The Metropolis Tower
 10 Metropolis Drive
 Hunghom, Kowloon, Hong Kong
 Tel: 852-2170 2828
 Fax: 852-2723 9684

India: **Canon India PVT. Ltd.**
 2nd Floor, Tower A&B
 Cyber Greens, DLF Phase III
 Guragon - 122002
 Haryana, India
 Tel: 91-124-516 0000
 Fax: 91-124-516 0011

Indonesia: **PT Samafitro**
 Jalan Ir. H Juanda No.8
 Jakarta 10120, Indonesia
 Tel: 62-21-345 5521
 Fax: 62-21-384 4271

Malaysia: **Canon Marketing (Malaysia) Sdn Bhd**
 Block D, Peremba Square
 Saujana Resort Section U2,
 40150 Shah Alam
 Selangor Darul Ehsan, Malaysia
 Tel: 60-3-7844 6000 / 7845 0055
 Fax: 60-3-78446196 / 6198

Maldives: **SIMDI Company Pte. Ltd**
 No.3 Koli Umar Maniku Goalhi
 Male' 20-02
 Republic of Maldives
 Tel: 960-324 819
 Fax: 960-310 549

Myanmar: **Accel International Co. Ltd.**
 FJV Commercial Centre
 Level 6, No 422 - 426
 Strand Road Botataung Township
 Yangon, Myanmar
 Tel: 951-202092 to 96
 Fax: 951-202079

Nepal: **International Electronics Concern (P) Ltd**
 Kha 14 1st Floor
 Haratibhawan Putalisadak
 Ramshah Path Kathmandu Nepal
 P.O Box 12588
 Tel: 977-1-4421 991
 Fax: 977-1-4421 909

Pakistan: **Shirazi Trading Company (Pvt.) Ltd**
 2nd Floor Nadir House II
 Chundrigar Road
 Karachi 74000 Pakistan
 Tel: 92-21-242 4075
 Fax: 92-21-241 4998

Philippines: **Canon Marketing (Philippines) Inc.**
 Marvin Plaza Building
 2153 Don Chino Rocas Avenue
 Makati City Metro Manila Philippines
 Tel: 632-812 6047
 Fax: 632-812 0067

Sri Lanka: **Metropolitan Office (Pvt.) Ltd.**
 12, Magazine Road Colombo 08
 Sri Lanka
 Tel: 94-11-2437797
 Fax: 94-11-2448980

Thailand: **Canon Marketing (Thailand) Co. Ltd**
 10th Floor Bangkok City Tower
 179/34-45 South Sathorn Road
 Bangkok 10120
 Tel: 66-2-344 9999
 Fax: 66-2-344 9960

Vietnam: **Canon Singapore Pte Ltd**
Ho Chi Minh City Representative Office
 11 Me Linh Square,
 Ho Huan Nghiep St.
 Ground Floor, Dist 1,
 HCM City, Vietnam
 Tel: 848-8277311
 Fax: 848-8277283

Hanoi City Representative Office
 Unit 601 and 602,
 6th Floor, Viet Au Building
 205 Giang Vo. Hanoi
 Tel: 844-5121033
 Fax: 844-5121022