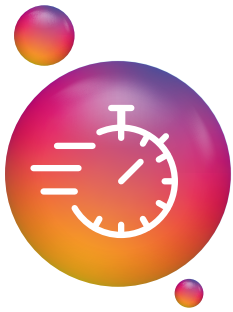


**Canon**

Delighting You Always



# BE VICTORIOUS WITH **V SERIES**

imagePRESS V900/V800/V700





## BE VICTORIOUS WITH **V SERIES**

Introducing **V Series**, cutting-edge colour digital production printers that offer an exceptional printing experience for businesses. This printer boasts five core features that set it apart from other models on the market: **Versatility**, **Viability**, **Volume Printing**, **Vibrant Colors** & production printing with a **Vision** to enhance business. With its **Versatile** capabilities, the **V Series** can handle a wide range of print jobs, from basic documents to high-quality marketing materials on specialty media including synthetic, textures as well as envelopes. It is also a **Viable** option for printing businesses that require efficient and cost-effective printing solutions. With its impressive High **Volume** printing capabilities, the **V Series** can churn out large quantities of prints quickly and it's easy on media switching of different paper g/m<sup>2</sup> (gsm), making it an ideal solution for busy print shops and in-house printing departments. The printer's exceptional quality ensures that your prints are sharp and detailed, while its **Vibrant Colors** add a pop of life to every page. **V Series** in a production print premise offers a **Visionary** long-term association to its users. It is not just a one-time acquisition, but rather an investment with a long-term partnership. Users can expect to benefit from service support, ensuring that their equipment continues to reap benefits for years to come. Overall, the **V Series** is an excellent choice for businesses that require high-quality, reliable, and efficient printing solutions.

{ COLOR DIGITAL  
**PRODUCTION  
PRINTER** SERIES }



imagePRESS V900/V800/V700 with MultiDrawer,  
DADF & Booklet Finisher-AG Series

So, it's time you take your business to next level in terms of performance & profitability and **Be Victorious with V Series!**

# Viable

## Production printing for increased productivity

The imagePRESS V900 Series is a true, light- to mid-volume production press that incorporates advanced technologies to help print establishments achieve amazing results—all in a small footprint. Incorporated into this color digital press is Canon's passion and unique understanding of imaging, photography, color science, and workflow. This expertise has resulted in a high-quality digital press that's both productive and versatile for printing establishments of varying shapes and sizes.



### Outstanding Productivity

- Production speeds of up to 90 A4 pages/min
- Maintains rated speed on uncoated stocks up to 220g/m<sup>2</sup>
- 7 650-sheet feeding capacity with up to six different sources
- Wide array of productive Canon and third-party in-line accessories

### Brilliant Versatility

- Supports stocks up to 350g/m<sup>2</sup>
- Runs a variety of envelopes and long sheets up to 1 300mm
- Helps achieve highly accurate and consistent registration, even on large and heavy stocks

### Amazing Quality

- 2 400 x 2 400dpi print resolution utilizing the unique R-VCSEL imaging technology
- Intuitive calibration process that uses internal sensors to measure test patches
- Translucent CV Toner produces vibrant images on a wide variety of stocks
- Multi D.A.T. helps to achieve consistent color across long runs automatically



High Productivity  
Across Your Run



Support for a Wide Range  
of Specialty Stocks



Superb Colour  
Repeatability



# Versatile & Vibrant

## A multidimensional printer for greater value



### Optimal Productivity

Reach impressive production speeds of up to 90 pages of A4 impressions per minute and allow your operators to tend to crucial tasks while the press auto duplexes heavy and thick stocks up to 350g/m<sup>2</sup> and long-sheet stocks up to 762mm in length.



### Accurate Alignment with CRT (Compact Registration Technology)

A combination of digital sensors, together with registration rollers, helps to ensure that even heavy and large sheets are accurately and consistently positioned.



### Detail Down to the Dot

Output crisp, colour images with remarkable clarity at high speeds with the imagePRESS V900 Series' state-of-the-art R-VCSEL laser technology at 2 400 x 2 400dpi and 190lpi



### Checking Things Twice (Multi Exposure Technology)

Every dot is imaged twice, helping to produce accurate, superb quality across long runs and throughout the life of the drum.



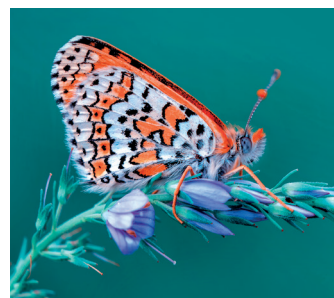
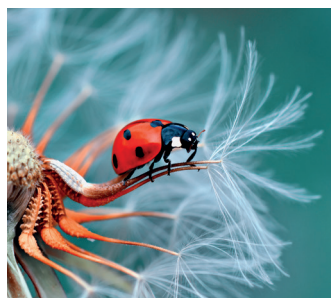
### Offset-like Print Quality

By allowing the surface properties of your media to show through Canon's translucent CV Toner, the press can produce amazingly vibrant and vivid images across the entire sheet surface on a wide variety of stocks.



### A Vast Media Selection

Offers customers more with wide support of various types of medias, including envelopes uncoated, coated, thick & embossed, stocks and print on long sheets up to 1 300mm.



### Ready for Smooth and Rough Surfaces

The combination of its flexible transfer belt (EITB) and Simple Transfer Adjustment technology allows toner to fill in the peaks and valleys of your textured and embossed stocks, producing high-density images for custom and premium applications.



### Predictable Colors

Making sure that the imagePRESS V900 Series produces your expected results is as simple and fast by doing Printer Linearization & Density Calibration using Built-In Spectrophotometer. ACCT and Shading Correction makes color reproduction surer.



### Consistent Colors

Maintaining a consistent environment and automatic measuring of multi-gradation density patches (MULTI DAT) combine to help ensure that your highlights, midtones, and shadows are reproduced to your high expectations.



### Choice of iPR Printer Kit or Fiery P400

iPR V900 Series offers choice of imagePRESS Printer Kit featuring Adobe PostScript Print options or Fiery P400 Print Controller capable of managing Simple or Complex Job, Perform Color Management and makes Print Spooling & Processing more efficient.

GENERAL SPECIFICATIONS					
Print Speed	V900	V800	V700	Interface Type	USB 2.0 Hi-speed Ethernet: 1000 BaseT/100Base -TX/10Base-T Standard: 1 x USB Host
Recommended Monthly Volume	up to 90 A4 pages/min 40 000 to 2 50 000 pages (A4)	up to 80 A4 pages/min 30 000 to 2 20 000 pages (A4)	up to 70 A4 pages/min 15 000 to 1 90 000 pages (A4)	Network Protocols	
Registration Tolerance	Front to Back: 0.8mm or less			Processor Speed	
Printing Method	Colour Laser Beam Printing			Memory	
Print Resolution	Up to 2 400dpi x 2 400dpi, 256 gradations			Hard Disk Drive	1.8GHz Dual Core  6GB
Paper Capacity	Standard : 3 x 550-sheet cassettes (80g/m <sup>2</sup> ) POD Deck Lite (A4/A3/SRA3) : 1 x 3 500 sheets side paper deck POD Deck Lite XL : 1 x 3 500 sheet side paper deck (A4/A3/SRA3), 1 x 1 000 sheets of length > 487.7mm  Multi-drawer Deck-E1 : Upper/ Middle : 2 x 1 500 sheets Lower Deck: 1 x 2 000 sheets (A4/A3/SRA3)			Control Panel for EFI, Canon PS/PCL	SSD 512GB  Operating Panel-A1 (25.6cm ) WSVGA LED Backlight Colour Uplight Touchscreen
Max Paper Input Capacity	10 400 sheets (A4, 80g/m <sup>2</sup> )			Dimensions (W x D x H)	1 327mm* x 872mm x 1 185mm** (W x D x H)  * Includes optional Control Panel and Copy Tray-R2 ** Includes Upright Control Panel-G1 (If Operating Panel-A5 and Operator Attention Light-A1 are attached, total height is 1,632mm)
Max Paper Output Capacity	11 200 sheets (A4, 80g/m <sup>2</sup> )			Minimum Installation Space (W x D)	1 952mm x 1 524mm (W x D)
Supported Media Types	Cassettes: Thin paper, Plain paper, Recycled paper, Colour paper, Heavy paper, Pre-punched paper, Bond, Letterhead, Tab paper* Transparency, Envelopes**  Multi-purpose tray: Thin paper, Plain paper, Recycled paper, Colour paper, Heavy paper, Coated paper, Pre-punched paper, Tab paper, Bond, Transparency, Label, Envelopes, Letterhead  Optional Paper Deck: Thin paper, Plain paper, Recycled paper, Colour paper, Heavy paper, Pre-punched paper, Coated paper , Textured, Bond, Transparency, Label, Letterhead, Tab paper, Envelopes**  * Requires Tab feeding attachment ** Requires Envelope feeding attachment			Weight	Approx 284kg* *includes ADF
Supported Media Sizes	Paper cassette 1/2/3 Standard size: A3, A4, A4R, A5R, SRA3, 330 x 483mm (13 x 19inch) Free size: 100 x 148mm to 330.2 x 487.7mm Envelopes: No.10 (COM10), Monarch, DL, ISO-C5  Stack Bypass-C1 (Multi-purpose tray) Standard size: A3, A4, A4R, A5R, SRA3, 330 x 483mm (13 x 19inch) Free size: 100 x 148mm to 330.2 x 487.7mm Long sheet*: 210 x 487.8mm to 330.2 x 1 300mm Envelopes: No.10 (COM10), Monarch, DL, ISO-C5  *Requires Long Sheet Tray-B1 and Stack Bypass Alignment Tray-D1  POD Deck Lite-C1 Standard size: A3, A4, A4R, A5R, SRA3, 330 x 483mm (13 x 19inch) Free size: 139.7 x 148mm to 330.2 x 487.7mm Envelopes: No.10 (COM10), Monarch, DL, ISO-C5  POD Deck Lite XL-A1 Standard size: A3, A4, A4R, A5R, SRA3, 330 x 483mm (13 x 19inch) Free size: 139.7 x 148mm to 330.2 x 487.7mm Long sheet: 210 x 487.8mm to 330.2 x 762mm Envelopes: No.10 (COM10), Monarch, DL, ISO-C5  Multi-drawer Paper Deck-C1 Standard size: A3, A4, A4R, A5R, SRA3, 330 x 483mm (13 x 19inch) Free size: 139.7 x 182mm to 330.2 x 487.7mm Envelope: ISO-C5			Operating Environment	Temperature: 20 to 27°C (50 to 86°F) Humidity: 15 to 60% RH (no condensation)
Supported Media Weights	Cassettes : 52 to 300g/m <sup>2</sup> Multi-purpose tray/ Optional paper decks : 52 to 350g/m <sup>2</sup> Duplex : 52 to 350g/m <sup>2</sup>			Power Source	220-240V (310%), 50/60Hz (32Hz), 16A x 2 *All Europe  220-240V (310%), 50/60Hz (32Hz), 13A x 2 *UK
Warm-Up Time	Approx. 360 seconds			Power Consumption	Maximum: Approx 1,560W (at power supply) or less + 2,500W (at fusing unit) or less Plug In-Off mode: Approx. 1.0Wh Sleep mode: Approx. 1.5Wh or less Typical Electricity Consumption (TEC) rating: 10.7kWh (imagePRESS V900), 9.9kWh (imagePRESS V800), 8.9kWh (imagePRESS V700)
				Noise Levels	Sound Power level: Active: 77dB or less (imagePRESS V900), 76.3dB or less (imagePRESS V800), 75.5dB or less (imagePRESS V700)  Standby: 58dB or less (imagePRESS V900/V800/V700)
SCAN SPECIFICATIONS					
Name	Duplex Colour Image Reader Unit-P1				
Type	Colour Platen and Single-pass Duplexing Automatic Document Feeder* [2-sided to 2-sided(Automatic)] * Detect Feeder Multi Sheet Feed is supported				
Supported Media Sizes	A3S, A4L, A4S, A5L, A5S, A6S, B4S, B5L, B5S, B6S, 11"x17"S, LGLS, LTRL, LTRS, STMTL, STMTS, 8KS, 16KL				
Supported Media Weights(BW/CL)	Single-sided scanning (BW/CL): 38 to 220g/m <sup>2</sup> / 50 to 220g/m <sup>2</sup> ; Double-sided scanning (BW/CL): 50 to 220g/m <sup>2</sup> / 50 to 220g/m <sup>2</sup>				
Scan Resolution	Copy: 600dpi x 600dpi Send: 600dpi x 600dpi / 300dpi x 300dpi				
Duplex Scanning	2-sided to 2-sided (Automatic)				
Scan Speed	BW: 270 impressions/minute(A4/LTR) CL: 270 impressions/minute(A4/LTR)				

INPUT ACCESSORY SPECIFICATIONS	
POD Deck Lite-C1	Standard size: A3, A4, A4R, A5R, SRA3, 330 x 483mm (13 x 19inch) Free size: 139.7 x 148mm to 330.2 x 487.7mm Envelopes: No.10 (COM10), Monarch, DL, ISO-C5 Paper Weight: 52 to 350g/m <sup>2</sup> Paper Capacity: 3 500 sheets (80g/m <sup>2</sup> ) / 4 000 sheets (64g/m <sup>2</sup> ) Dimensions (W x D x H): 717mm x 686mm x 574mm Weight: Approx. 76kg
POD Deck Lite XL-A1	Standard size: A3, A4, A4R, A5R, SRA3, 330 x 483mm (13 x 19inch) Free size: 139.7 x 148mm to 330.2 x 487.7mm Long sheet: 210 x 487.8mm to 330.2 x 762mm Envelopes: No.10 (COM10), Monarch, DL, ISO-C5 Paper Weight: (Up to 487.7mm length) 52 to 350g/m <sup>2</sup> (Over 487.7mm up to 762mm length) 64 to 300g/m <sup>2</sup> Paper Capacity: (Up to 487.7mm length) 3 500 sheets (80g/m <sup>2</sup> ) / 4 000 sheets (64g/m <sup>2</sup> ), (Over 487.7mm up to 762mm length) 1 000 sheets (80g/m <sup>2</sup> ) Dimensions (W x D x H): 1 105mm x 686mm x 574mm Weight: Approx. 113kg
Multi-Drawer Paper Deck-E1	Standard size: A3, A4, A4R, A5R, SRA3, 330 x 483mm (13 x 19inch) Free size: 139.7 x 182mm to 330.2 x 487.7mm Envelope: ISO-C5 Paper Capacity: Upper/ Middle : 2 x 1 500 sheets Lower Deck: 1 x 2 000 sheets. Total: 5 000 sheet (80g/m <sup>2</sup> ) Dimensions (W x D x H): 950mm x 797mm x 1 040mm Weight: Approx. 155kg
Stack Bypass-D1	Standard size: A3, A4, A4R, A5R, SRA3, 330 x 483mm (13 x 19inch) Free size: 100 x 148mm to 330.2 x 487.7mm Long sheet*: 210 x 487.8mm to 330.2 x 1 300mm Envelopes: No.10 (COM10), Monarch, DL, ISO-C5 *Requires Long Sheet Tray-B1 and Stack Bypass Alignment Tray-D1  Paper Weight: 52 to 350g/m <sup>2</sup> Paper Capacity: 250 sheets (80 or 64g/m <sup>2</sup> ), 1 sheet (Long sheet) Dimensions* (W x D x H): 749mm x 528mm x 402mm *With the Stack Bypass Alignment Tray-D1 and the Long Sheet Tray-B1 Weight*: Approx. 9.5kg *With the Stack Bypass Alignment Tray-D1 and the Long Sheet Tray-B1

OUTPUT ACCESSORY SPECIFICATIONS	
Staple Finisher -AG1	Upper Tray (A) Capacity: A4/A4R/A5R/A3/SRA3/330 x 483mm 1 000 sheets Long sheet (Over 487.7mm up to 762mm length) 100 sheets (52-79g/m <sup>2</sup> ) / 50 sheets (80-150g/m <sup>2</sup> ) / 25 sheets (151-300g/m <sup>2</sup> )  Lower Tray (B) Capacity: A4 4 000 sheets (52-80g/m <sup>2</sup> ) / 3 000 sheets (80.1-300 g/m <sup>2</sup> ), A4R 2 000 sheets (52-300g/m <sup>2</sup> ), A3 1 500 sheets (52-300g/m <sup>2</sup> ), SRA3 1 000 sheets (52-300g/m <sup>2</sup> ), Any size 200 sheets (301-350g/m <sup>2</sup> )  Paper Weight: 52 to 300g/m <sup>2</sup> Staple Position: Corner, Double Staple Capacity: A4: 100 sheets, A3/A4R: 50 sheets Dimensions (W x D x H): 800mm x 792mm x 1 239mm (with Long Sheet Tray : 1 136mm x 792mm x 1 239mm) Weight: Approx. 130kg Power: 220-240V, 50-60Hz, 8A
Booklet Finisher-AG1	Tray Capacity / Paper Weight / Staple Position / Staple Capacity: same as Staple Finisher-W1 PRO Booklet stitch paper size: A3, A4R, SRA3, 330 x 483mm Free size (210 x 279.4mm to 330.2 x 487.7mm) Booklet stitch paper weight: Body sheet 52-220g/m <sup>2</sup> , Cover sheet 64-300g/m <sup>2</sup> Booklet stitch staple capacity: 25 sheets (52-80g/m <sup>2</sup> , include cover) Dimensions (W x D x H): 800mm x 792mm x 1 239mm (with Long Sheet Tray : 1 136mm x 792mm x 1 239mm) Weight: Approx. 110kg Power: 220-240V, 50-60Hz, 8A
Puncher Unit-BT1/BU1	Requires either the Booklet Finisher-W1 Pro or Staple Finisher-W1 Pro Punch Hole type: BT1: 2 holes and 4 holes (FRN) selectable, BU1: 4 holes (Swe) Punch Paper Weight: 52-300g/m <sup>2</sup> Punch Paper Size: 2 holes: A3, A4, A4R, Free size (182 x 182mm to 297 x 432.0mm excluding 203 x 257mm to 297 x 270mm) 4 holes: A3, A4, Free size (257 x 182mm to 297 x 432mm)

Copy Tray-R2	Paper Size: All available size on marking engine Paper Weight: 52 to 300g/m <sup>2</sup> Output Capacity: 250 sheets at simplex/duplex printing Dimensions (W x D x H): 422mm 382mm 175mm Weight: Approx. 1.2kg
High Capacity Stacker-H1	Paper Size: A3, A4, A4R, A5R, SRA3, 330 x 483mm Free size (140 x 182mm to 330.2 x 1 300mm) Paper Weight: 52 to 350g/m <sup>2</sup> Output Capacity Stack tray: 6 000 sheets (80g/m <sup>2</sup> ) in two stacks of 3 000 sheets each Top Tray: 200 sheets (80g/m <sup>2</sup> , 140 x 182mm to 330.2 x 762 mm), 100 sheets (210 x 762.1mm to 330.2 x 1 300mm) Dimensions (W x D x H): 899mm 745mm 1 040mm Weight: Approx. 120kg Power: 90-264V, 47-63Hz, 10A
Perfect Binder-F1	Booklet size: 203 x 138mm to 297 x 216mm Booklet thickness: Up to 25mm Cutting Range: Top/bottom: 6.5 to 39.5mm at each edge, fore edge: 6.5 to 49.5mm  Body pages: Sizes: A4, SRA4, Free size (257 x 182mm to 320 x 228.6mm) Paper weight and number of sheets: Thin Paper (52-63g/m <sup>2</sup> ): 30-200 sheets Plain Paper (64-80g/m <sup>2</sup> ): 10-200 sheets Plain Paper (81-90g/m <sup>2</sup> ): 10-150 sheets Thick Paper (91-105g/m <sup>2</sup> ): 10-150 sheets Thick Paper (106-163g/m <sup>2</sup> ): up to 10 sheets as insertion sheet or up to 25mm as thickness of bunch  Cover: Number of Sheets: 1 sheet Sizes: A3, SRA3, Free size (257 x 364mm to 330.2 x 487.7mm) Paper weight: 90 to 300g/m <sup>2</sup> Tray capacity: Approx.127mm or total approx. 1,000 sheets of paper as a total Dimensions : 922mm x 791mm x 1 300mm Weight Approx. 308kg Power: 220-240 V, 50/60 Hz, 3.0 A
Document Insertion Unit-R1	Number of trays: 2 trays Paper size: A3, A4, A4R, SRA3, 330 x 483mm Free size (182 182mm to 330.2 487.7mm) Paper Weight: 52 to 300g/m <sup>2</sup> Paper Capacity: 200 sheets x 2 trays (80g/m <sup>2</sup> ) Dimensions (W x D x H): 336mm 746mm including Tray) 793mm 1 407mm Weight: Approx. 61kg Power: 100-240V, 50/60Hz, 1.0A
Paper Folding Unit-K1	<Z-Fold> Paper Size: A3, A4R, Paper Weight: 52 to 105g/m <sup>2</sup> , Output Capacity: same as Staple/Booklet Finisher-W1 PRO <C-Fold> Paper Size: A4R, Paper Weight: 52 to 105g/m <sup>2</sup> , Output Capacity: 40 sheets (81.4g/m <sup>2</sup> ) <Accordion Z-fold> Paper Size: A4R, Paper Weight: 52 to 105g/m <sup>2</sup> , Output Capacity: 40 sheets (81.4g/m <sup>2</sup> ) <Double parallel> Paper Size: A4R, Paper Weight: 52 to 90g/m <sup>2</sup> , Output Capacity: 25 sheets (81.4g/m <sup>2</sup> ) <Half fold> Paper Size: A4R, Paper Weight: 52 to 105g/m <sup>2</sup> , Output Capacity: same as Staple/Booklet Finisher-W1 PRO Dimensions (W x D x H): 336mm 793mm 1,190mm Weight: Approx. 71kg
Booklet Trimmer-G1	Requires Booklet Finisher-W1 PRO Trim Width: 2-28mm Trim Thickness: Up to 50 sheets (include cover) Paper Weight: 52 to 300g/m <sup>2</sup> Chip tray capacity: Approx. 5,000 sheets (Trim width 20mm, A4, 80g/m <sup>2</sup> ) Dimensions (W x D x H): 2 095mm (including joint, conveyor and output tray) x 790mm x 1 040mm Weight: Approx. 178kg (including conveyor and output tray)
Two-Knife Booklet Trimmer-B1	Requires Booklet Trimmer-F1 Trim Width: 2-15mm Trim Thickness: Up to 50 sheets (include cover) Paper Weight: 52 to 300g/m <sup>2</sup> (Trim 60 to 300g/m <sup>2</sup> ) Chip tray capacity: Approx. 1 500 sheets (Trim width 15mm, A4, 80g/m <sup>2</sup> ) Dimensions (W x D x H): 2 312mm (including Booklet Trimmer-F1) x 790mm x 1 040mm Weight: Approx. 145kg Power: 220-240V, 60Hz, 2.3A
Multi Function Professional Puncher-C1	<Punch> 75-300g/m <sup>2</sup> (Plain paper), 118-300g/m <sup>2</sup> (Coated paper) <Crease> 157-300g/m <sup>2</sup> (Plain paper / Coated paper) <Through> 75-350g/m <sup>2</sup> (Plain paper), 118-350g/m <sup>2</sup> (Coated paper)  Paper Size: <Through> 100 x 148mm to 330.2 x 1,300mm <Punch> SRA3, A3, SRA4, SRA4R, A4, A4R <Crease> SRA3, A3, A4R, 330 x 483mm, 330 x 487mm

<p><b>Staple Finisher-AC2</b> (only compatible with V800 &amp; V700)</p>	<p>Punch Tools: Plastic Comb 21-Hole, Twin Loop 23-Hole (Round/Square), Twin Loop 34-Hole (Round/Square), Color Coil 47-Hole, Velo Bind 12-Hole, Loose Leaf 4-Hole Punch, Loose Leaf 2-Hole Punch, Loose Leaf 4-Hole (Swedish), Crease</p> <p>Dimensions (W x D x H): 445mm x 795mm x 1 040mm Weight: Approx. 102kg Power: 230V, 50Hz, 1.9A</p> <p>Lower Tray (A) Capacity: A4/A5R 3,000 sheets (81g/m<sup>2</sup>), A4R/A3/SRA3/ 330 x 483mm 1 500 sheets (81g/m<sup>2</sup>), Long sheet* (Over 487.7mm up to 762mm length) 100 sheets (79g/m<sup>2</sup>) Long sheet* (Over 762mm length) 1 sheet All size of thin paper (52-59g/m<sup>2</sup>) 1 500 sheets Capacity for coated paper is half of that for plain paper *Long Sheet Tray is required</p> <p>Upper Tray (B) Capacity: A4/A5R 250 sheets (80g/m<sup>2</sup>), A4R/A3/SRA3/330 x 483mm 125 sheets (80g/m<sup>2</sup>) Mid Tray (C) Capacity: A4/A5R 250 sheets (80g/m<sup>2</sup>), A4R/A3/SRA3/ 330 x 483mm 125 sheets (80g/m<sup>2</sup>) Staple Position: Corner, Double Staple Capacity: &lt;Non coated media, 52-90g/m<sup>2</sup>&gt; A4: 65 sheets, A3/A4R: 40 sheets &lt;Coated media&gt; 2 sheets Dimensions (W x D x H): 527mm (Max 656*) x 623mm x 1 099mm (Max 1 195mm*) *when the auxiliary tray is extended. Weight: Approx. 35kg</p>	<p><b>Booklet Finisher-AC2</b> (Only compatible with V800 &amp; V700)</p> <p>Tray Capacity / Paper Weight / Staple Position / Staple Capacity: same as Staple Finisher-AC2 but if there are any sheets on the saddle tray, the capacity of Tray A becomes limited to 1 500 sheets Booklet stitch paper size: A3, A4R, Free size (195 x 270 mm to 304.8 457.2mm) Booklet stitch paper weight: Body sheet 52-220g/m<sup>2</sup>, Cover sheet 52-256g/m<sup>2</sup> Booklet stitch staple capacity (including 1 cover sheet): Non coated media; 20 sheets (52-81.4g/m<sup>2</sup>), 10 sheets (82-105g/m<sup>2</sup>), 5 sheets (106-150g/m<sup>2</sup>), 4 sheets (151-209 g/m<sup>2</sup>), 3 sheets (210-220g/m<sup>2</sup>) Coated media; 5 sheets (85-150g/m<sup>2</sup>), 4 sheets (151-209g/m<sup>2</sup>), 3 sheets (210-220g/m<sup>2</sup>) Dimensions (W x D x H): 527mm (Max 565*) x 623mm x 1 099mm (Max 1 195mm*) Weight: Approx. 58kg *Long Sheet Tray is required</p> <p><b>Finisher Jogger Kit-A1</b></p> <p>Requires either Stapler or Booklet Finisher-AC2. Paper Weight: Non Sort 52-350g/m<sup>2</sup>, Bunch Shift 52-256g/m<sup>2</sup> Paper Size: Non Sort A3/A4/A4R, Bunch Shft A3/A4/A4R</p> <p><b>2/4 Hole Puncher Unit-A1</b></p> <p>Requires either Staple or Booklet Finisher-AC2. Punch Hole type: 2 holes and 4 holes (FRN) selectable Paper Weight: 52-256g/m<sup>2</sup> Paper Size: 2 holes: A3, A4, A4R 4 holes: A3, A4</p> <p><b>4 Hole Puncher Unit-A1</b></p> <p>Requires either Staple or Booklet Finisher-AC1. Punch Hole type: 4 holes (SWE) Paper Weight: 52-256g/m<sup>2</sup> Paper Size: A3, A4, A4R</p>
--	--	---

## Print Options

### imagePRESS Printer Kit

<b>Page Description Languages</b>	Adobe PostScript/PCL 5/6 & UFR II
<b>Resolution</b>	1 200dpi x 1200dpi, 600dpi x 600dpi
<b>Memory</b>	SSD 512GB
<b>RAM</b>	6GB
<b>Processor</b>	1.8GHz Dual Core

### Fiery - Part of imagePRESS Printer Family - P400

<p><b>Fiery Driven™ Engines</b></p> <ul style="list-style-type: none"> <li>Canon imagePRESS V900/800/700</li> </ul> <p><b>Hardware and Platform</b></p> <ul style="list-style-type: none"> <li>Intel® Pentium® G5400 Processor</li> <li>8GB RAM</li> <li>500GB HDD</li> <li>Linux operating system</li> <li>Fiery Installer Builder</li> <li>Fiery FS500 software</li> </ul> <p><b>File Format Support</b></p> <ul style="list-style-type: none"> <li>Adobe® PostScript® Levels 1, 2, 3</li> <li>Adobe PDF</li> <li>Enhanced PCL® 6/PCL 5</li> <li>MS Office document formats (doc/x xls/x, ppt/x, pub/x) via the Fiery driver or Fiery Hot Folders</li> </ul> <p><b>Fiery Color and Imaging Technology</b></p> <ul style="list-style-type: none"> <li>1- step color management</li> <li>Zero-touch Recalibration</li> <li>Fiery ColorWise® colour management technology</li> <li>Fiery Edge™ colour profiles</li> <li>Fiery Calibrator</li> <li>PANTONE® colour enabled</li> <li>Image smoothing</li> <li>Fiery Spot-On™</li> <li>Fiery Image Enhance Visual Editor (requires Fiery ColorRight Package)</li> <li>Auto trapping</li> </ul> <p><b>Adobe Interpreter Support</b></p> <ul style="list-style-type: none"> <li>CPSI version 3020</li> <li>Adobe PDF Print Engine® 5.51 (optional)</li> </ul>	<p><b>Device Management and Analytics</b></p> <ul style="list-style-type: none"> <li>EFI™ IQ™: Dashboard, Insight, Notify, Go</li> <li>EFI ColorGuard™ (optional)</li> <li>EFI Manage (optional)</li> </ul> <p><b>Performance</b></p> <ul style="list-style-type: none"> <li>SmartRIP</li> <li>Spool-RIP-print simultaneously</li> <li>Scan-RIP-print simultaneously</li> </ul> <p><b>Productivity and Workflow</b></p> <ul style="list-style-type: none"> <li>Fiery Command WorkStation®</li> <li>Fiery Hot Folders and Virtual Printers</li> <li>Fiery JobExpert (optional)</li> <li>Fiery drivers for Windows and Mac®</li> <li>Fiery WebTools™</li> <li>Booklet Maker</li> <li>Direct mobile printing</li> <li>Fiery Go (Android® and iOS)</li> <li>Print-time estimation</li> </ul> <p><b>Variable Data Printing</b></p> <ul style="list-style-type: none"> <li>Fiery FreeForm™ Create</li> <li>Supported file formats: <ul style="list-style-type: none"> <li>Fiery FreeForm Plus PDF/VT-1 (Requires Fiery JobExpert and PDF Processing Kit)</li> </ul> </li> <li>VDP record range printing</li> <li>Define record length</li> <li>Record and set level finishing support</li> <li>VDP raster preview</li> </ul> <p><b>Integration</b></p> <ul style="list-style-type: none"> <li>Canon Uniflow compatible</li> <li>Fiery JDF v1.8 (Requires Fiery Automation package)</li> <li>EFI MIS and Web-to-Print integration ready</li> </ul>	<ul style="list-style-type: none"> <li>Prepress workflow integration (Agfa® Apogee, Kodak® PRINERGY, Heidelberg® Prinect)</li> </ul> <p><b>Optional Fiery Software and Hardware</b></p> <ul style="list-style-type: none"> <li>Fiery Automation Package1 <ul style="list-style-type: none"> <li>Rush Print, Schedule Print, Print/Process Next, Fiery Preflight, Fiery JobFlow™ Base, Fiery JDF</li> </ul> </li> <li>Fiery ColorRight Package1 <ul style="list-style-type: none"> <li>Fiery Spot Pro, Fiery ImageViewer, Fiery Image Enhance Visual Editor, Fiery Postflight, Control Bar</li> </ul> </li> <li>Fiery JobExpert and PDF Processing Kit: <ul style="list-style-type: none"> <li>Fiery JobExpert. Adobe PDF Print Engine, PDF/ VT-1 support</li> </ul> </li> <li>Fiery Impose1</li> <li>Fiery Compose1</li> <li>Fiery JobMaster™ 1</li> <li>Fiery JobFlow1 (requires Fiery Automation Package)</li> <li>Fiery Color Profiler Suite2</li> <li>ES-3000 spectrophotometer</li> <li>Adobe® Acrobat® Pro 2020 Kit</li> </ul> <p><b>Security</b></p> <ul style="list-style-type: none"> <li>Secure erase, Security Profiles, Security Audit Logs</li> <li>Port blocking, IP filtering, 802.1x authentication, IPsec encryption, HTTPs with TLS 1.3 support</li> <li>Enhanced certificates management. Fiery selfsigned certificates are recreated automatically</li> <li>Secure printing, PostScript security, USB security Closed architecture</li> </ul>	<ul style="list-style-type: none"> <li>Digitally signed software updates</li> </ul> <p><b>Networking/Connectivity</b></p> <ul style="list-style-type: none"> <li>TCP/IP, AppleTalk, Bonjour support, SNMP, Port 9100, IPP, FTP, SMB, WSD, point and print, print via email (PS/ PDF), IPv6 support EMI/EMC</li> <li>FCC and ICES (US &amp; Canada)</li> <li>CE Mark (EU)</li> <li>UK CA (UK / Australia / New Zealand)</li> </ul> <p><b>Safety</b></p> <ul style="list-style-type: none"> <li>CB Scheme by TÜV</li> <li>UL/CSA</li> <li>CE Mark</li> <li>UK CA</li> <li>CCC</li> <li>BSMI</li> <li>EAC</li> </ul> <p><b>Power Supply and Consumption</b></p> <ul style="list-style-type: none"> <li>Auto-switching: 100-240VAC</li> <li>50/60Hz, 3Amps @100VAC</li> <li>1.5Amps @240VAC</li> <li>Maximum / typical power usage: 80W / 30W</li> </ul> <p><b>Canon Compatibility</b></p> <ul style="list-style-type: none"> <li>Media librarian support</li> <li>Canon Uniflow compatible</li> </ul>
---	---	---	--





Canon India Complies with E-Waste (Management) Rules, 2016

Please return end-of-life product for environmentally safe disposal. For details visit [www.canon.co.in/recycle](http://www.canon.co.in/recycle)

This document is for information purpose only. The contents are subject to change without notice. Product options, name and availability may vary by regions. We expressly disclaim any liability or contractual obligations with respect to this document. Brands and products names are trademarks and/or registered trademarks of their respective owners.

Warnings: Unauthorized recording of copyrighted materials may infringe on the rights of copyright owners and be contrary to copyright laws.